



- Data-Logger shall be in Stop state to upload all setting. If the Data-Logger is still in use, the software will prompt an error message, see Fig. 8.

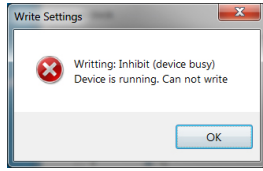


FIGURE 8

- 2.1.14. Erase all data
  - Erase all user setting from the Data-Logger's internal memory, and ready for next initialization
  - If necessary, download all recorded data from the Data-Logger before erasing all data. All recorded data will be lost once Erase all data operation is complete

- 2.1.15. Event log
  - Display software status

2.2. Read Logger

- 2.2.1. If the Data-Logger is still in use, the software will display a warning message, see Fig. 9

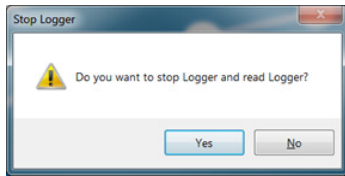


FIGURE 9

- 2.2.2. Click Yes to read data from the Data-Logger, and software prompts to input filename and location, see Fig. 10.

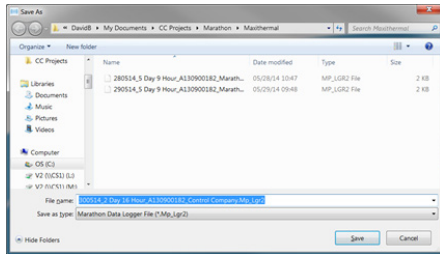


FIGURE 10

- 2.2.3. Click No, Data-Logger will continue to record, and data will not be downloaded to computer
- 2.2.4. Once data is downloaded to computer, data graph will be displayed, see Fig. 11

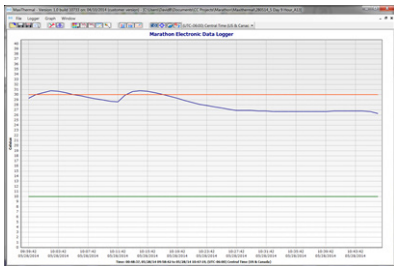


FIGURE 11

- 2.3. Stop C:\TempLCD(Type A)
  - 2.3.1. Stop Data-Logger from recording data. The software will ask for confirmation before stopping Data-Logger
  - 2.3.2. If Stop Key is set to No, Data-Logger can only be stopped from logging data through MaxiThermal software via USB connection

2.4. Summary

- 2.4.1. Displays summary of opened records, see Fig. 12

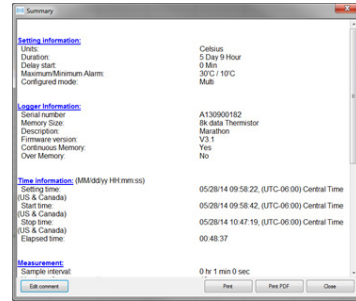


FIGURE 12

2.5. General Information

- 2.5.1. Retrieve and display information on Data-Logger's device information and settings.
- 2.5.2. Click Read to retrieve information from Data-Logger. Note: Data-Logger must be stopped to read. See Fig. 13

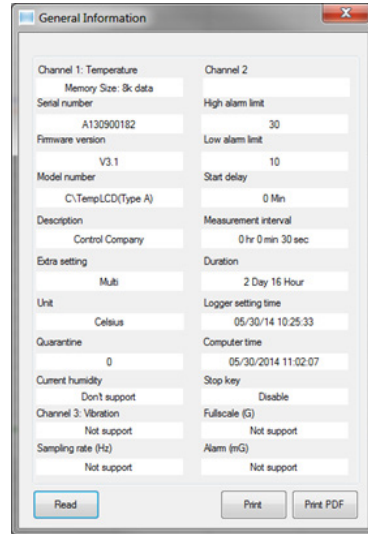


FIGURE 13

- 2.6. Multi Traces
  - 2.6.1. Display multiple traces at the same graph.
  - 2.6.2. Click Open to open multiple traces. Maximum number of traces is 20.
- 2.7. Setting Offset humidity—Only available Logger-Trac™ TEMP-RH
  - 2.7.1. Setting offset, see Fig. 14

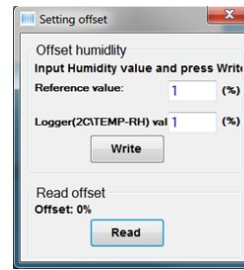


FIGURE 14

- 2.7.2. Input Reference value and Logger value, and click Write
- 2.7.3. Click Read to read offset value

2.8. Multi Logger Initialization

- 2.8.1. Initialize multiple Data-Loggers simultaneously
- 2.8.2. Set the parameters as stated in 2.1
- 2.8.3. Click Config Initialization, and a new window pops up, see Fig. 15

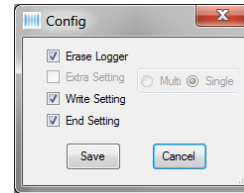


FIGURE 15

- 2.8.4. Click Write To All Device to perform operations specified in 2.8.3. A confirmation window pops up, see Fig. 16. Click Yes to start initialize multiple loggers, or click No to return.

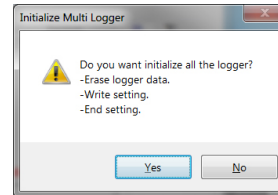


FIGURE 16

- 2.9. Calib Buzz – not available

3. Graph

- 3.1. View Summary Information: refer to 2.4
- 3.2. View Data
- 3.2.1. View recorded data only, see Fig. 17

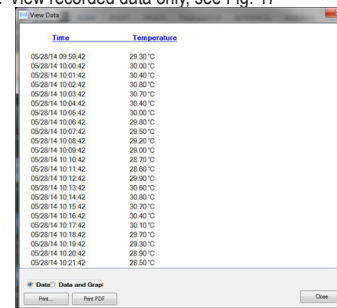


FIGURE 17

# MAXITHERMAL™ SOFTWARE FOR ELECTRONIC DATA LOGGER INSTRUCTIONS

- 3.2.2. Check Data or Data and Graph to print data only or data with graph.
- 3.3. Copy to clipboard
  - 3.3.1. Copy the graph to clipboard so that it can be pasted
- 3.4. Edit
  - 3.4.1. Edit the displayed graph: title, trace color
- 3.5. Grid
  - 3.5.1. Turn on/off vertical grid, horizontal grid
- 3.6. Toolbar
  - 3.6.1. Toggle toolbar display
- 4. Window
  - 4.1. When multiple recorded data files are open, select the way they are displayed
  - 4.2. Fullscreen all: full screen display. Click opened file to switch displayed graph
  - 4.3. Cascade all: cascade all opened graph

**WARRANTY, SERVICE, OR CALIBRATION**

For warranty, service, or calibration contact:

**CONTROL COMPANY**  
12554 Old Galveston Rd. Suite B230  
Webster, Texas 77598 USA  
Ph. 281 482-1714 • Fax 281 482-9448  
E-mail sales@control3.com • www.traceable.com

Control Company is ISO 9001:2008 Quality-Certified by DNV and ISO/IEC 17025:2005 accredited as a Calibration Laboratory by A2LA.